

29 August 2016

Ref: N0067d

Dear Resident

Day and night work: installation of permanent variable message sign on Beecroft Road, Beecroft

NorthConnex is a nine kilometre tunnel that will link the M1 Pacific Motorway at Wahroonga to the Hills M2 Motorway at West Pennant Hills, removing around 5,000 trucks off Pennant Hills Road each day.

Consultation was undertaken in January 2016 with residents and businesses to identify a suitable location for a permanent variable message sign (VMS) in your area. Based on feedback from this consultation, the VMS will be installed near the corner of 43 Beecroft Road and 10 Albert Avenue. The location is indicated in the map overleaf. The VMS will provide information to road users travelling north along Beecroft Road.

We thank you for your feedback.

What are we doing?

From **4 September 2016** work will start to install the sign which will be completed in stages over a five month period.

The first stage of work will involve preparatory work and construction of the structure. The second stage of work will be signage installation. The final stage will be testing and commissioning.

Work will include:

- Vegetation removal
- Trenching work for power and telecommunications
- Preparation for installation of sign footings including drilling and pouring of concrete
- Relocation of overhead power cables
- Installation of a control cabinet
- Installation of the permanent variable message sign (VMS)
- Construction of new kerb and general concrete works
- Backfilling and restoration of the road surface, footpath or verge at the completion of the work
- Connection and testing.

Plant and equipment for this work includes saws, hand held drills, jackhammers, excavators, dump trucks, compaction equipment, vacuum trucks, cranes, piling equipment, concrete trucks, lighting towers and generators.

The majority of work will be carried out at night between **9pm and 5am Sunday to Friday** to minimise impacts on traffic. We will notify impacted residents in advance of work occurring. Where possible, some work will be done during standard construction hours of 7am and 6pm Monday to Friday and 8am and 1pm Saturday.

You may experience increased noise during some of these activities and we will make every effort to minimise impacts by:

- Turning off machinery when not in use
- Using non-tonal reversing beepers on all machinery

Return 
local streets to local communities

Up to 
5,000 trucks per day
off Pennant Hills Road

Up to 
15 mins **travel time saving**


Deliver **improvements**
to local **air quality**

Up to 
21 **traffic lights bypassed**

improve 
the efficient movement of **state and national freight**


Better and more **reliable** trips
for people, businesses and freight

- Parking away from homes
- Noise monitoring to ensure compliance with noise limits
- Scheduling work to take place no more than two nights in a row and limiting work to no more than three nights in one week at the same location
- Ensuring that lighting is directed away from residences as much as practicable
- Coordinating respite for residents most affected by noise.

Temporary traffic changes

Partial lane closures will be required and traffic will be maintained in both directions under stop/slow traffic control. Traffic management will be in place when work is carried out to ensure the safety of motorists, residents and workers. This will include temporary diversions of the footpath in the immediate vicinity of the work. Please allow extra travel time for your journey.

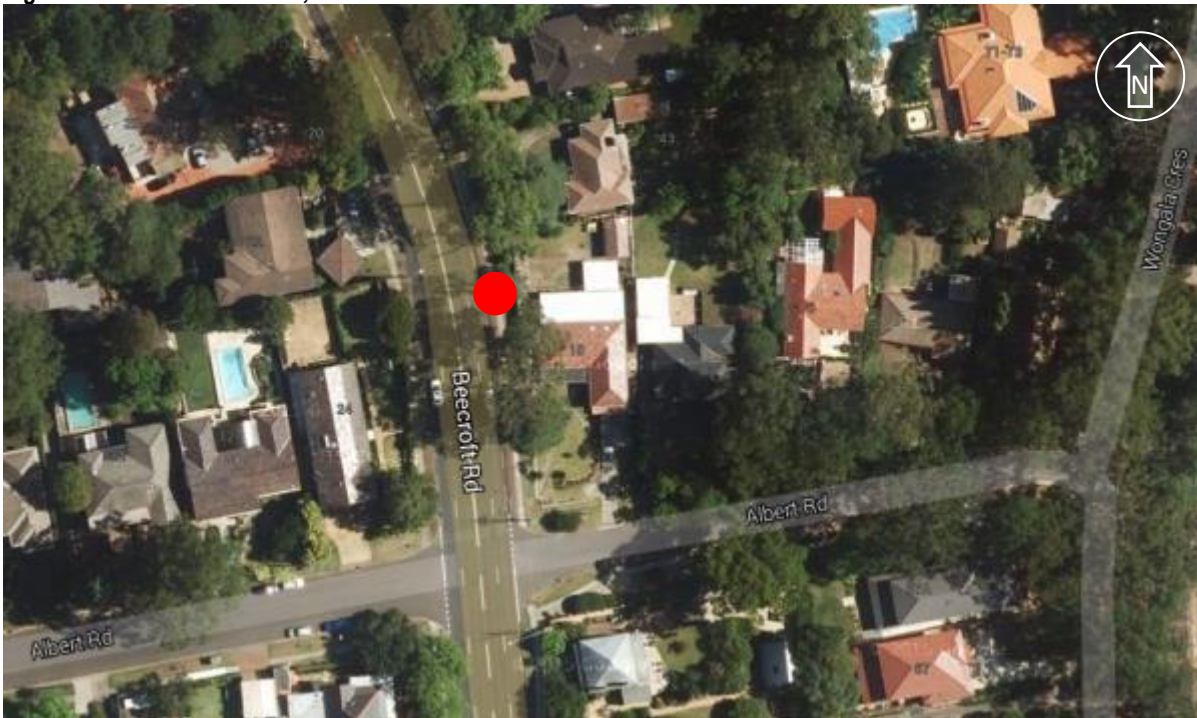
The sign will be located within the footpath corridor. Access to some properties may be restricted for short periods of time. Where access is restricted, residents will be contacted in advance and access maintained via traffic control located on site.

We thank you for your patience, and if you have any questions or complaints, please don't hesitate to call us on 1800 997 057, email enquiries@northconnex.com.au or visit the NorthConnex Community Information Centre at 118 Yarrara Road, Pennant Hills, open weekdays from 9am to 5pm.

Yours sincerely

NorthConnex Project Team

Sign location: Beecroft Road, Beecroft



Sign location



 www.northconnex.com.au

 enquiries@northconnex.com.au

 1800 997 057 (free call)