

17 August 2015

Ref: N0063

Dear Resident,

Pennant Hills Road, Thornleigh - services investigations: Night work

NorthConnex is a nine kilometre tunnel that will link the M1 Pacific Motorway at Wahroonga to the Hills M2 Motorway at West Pennant Hills, removing around 5,000 trucks off Pennant Hills Road.

Lendlease Bouygues Joint Venture has been awarded the contract to design and deliver the work.

What are we doing?

In preparation for the site establishment of the Trelawney Street Compound, the project team will investigate the location of services along Pennant Hills Road between Trelawney Street and Loch Maree Avenue.

Two southbound lanes are required to be closed to ensure the safety of workers and motorists.

To minimise the impact on motorists, the slow and middle lane closures will take place between **9pm and 5am on 23 and 24 August 2015**, weather permitting. The location is indicated on the map overleaf.

Equipment which may be used at this time includes a concrete saw, a vacuum truck, two light vehicles and hand tools such as shovels.

You may experience some noise during the work. We will make every effort to minimise impact by:

- Where possible complete noisier work earlier in the evening
- Turning off machinery when not in use
- Using non-tonal reversing beepers on all machinery
- Parking away from homes
- Noise monitoring to ensure compliance with noise limits.

We apologise for any inconvenience this may cause. We thank you for your patience, and if you have any questions, comments and complaints, please do not hesitate to call members of the project team on **1800 997 057**, email <mailto:enquiries@northconnex.com.au> or visit the NorthConnex Community Information Centre at 354 - 356 Pennant Hills Road, Pennant Hills, open every Tuesday from 9am to 12 noon, Thursday from 9am to 4pm and last Saturday of every month from 9am to 1pm until November.

Yours sincerely

NorthConnex Project Team



www.northconnex.com.au



enquiries@northconnex.com.au



1800 997 057 (free call)

Return 
**local streets to
local communities**

Up to 
5,000 trucks per day
off Pennant Hills Road

Up to 
15 mins
**travel time
saving**


Deliver
improvements
to local **air quality**

Up to 
21
**traffic lights
bypassed**

improve 
the efficient movement of
state and national freight


Better and more
reliable trips
for people, businesses and freight



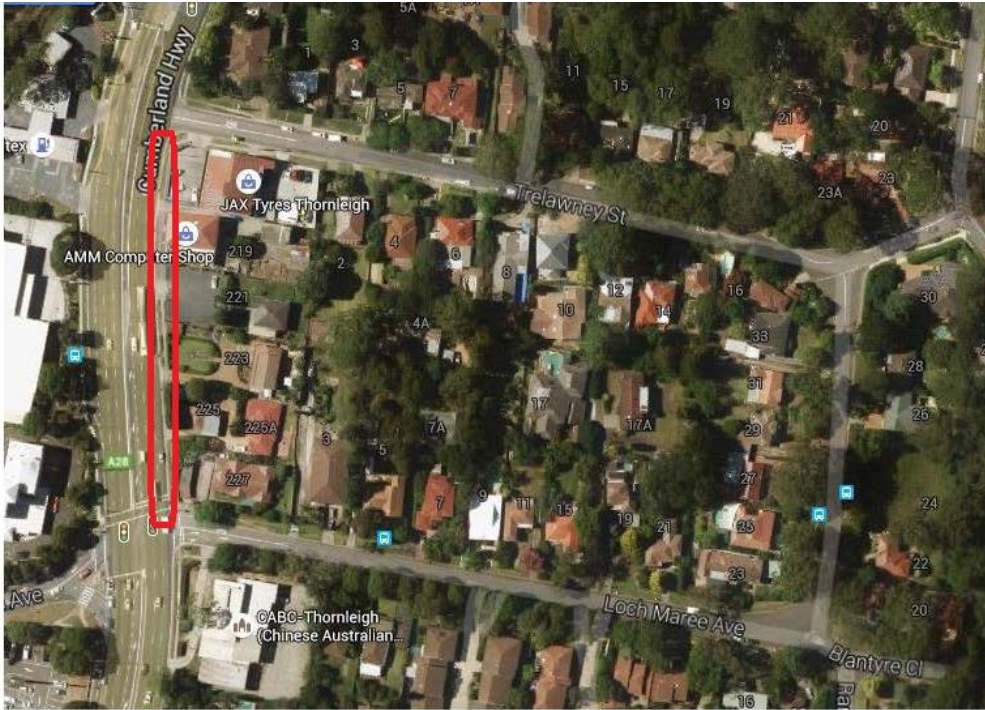
Australian Government


BUILDING OUR FUTURE

**NSW
NOW** The new state
of business

transurban

Map shows location of work for service investigations:



 Work Zone on Pennant Hills Road, Thornleigh