

5 April 2016
N0108

Dear Resident

Work on the Hills M2 Motorway eastbound off-ramp to Pennant Hills Road, West Pennant Hills

NorthConnex is a nine kilometre tunnel that will link the M1 Pacific Motorway at Wahroonga to the Hills M2 Motorway at West Pennant Hills, removing around 5,000 trucks off Pennant Hills Road each day.

Lendlease Bouygues Joint Venture has been awarded the contract to design and deliver the work.

As part of this work, changes will be made to the eastbound off-ramp at Pennant Hills Road. This is required so that a new northbound entry to the NorthConnex tunnel and a cycleway structure can be constructed.

What are we doing?

Starting on 10 April 2016 work will begin on the M2 Motorway eastbound off-ramp to Pennant Hills Road and the adjacent Hills M2 boundary reserve. The work is required to create additional road pavement and structures that will provide access into the northbound NorthConnex tunnel.

To allow this work to be done, modifications to the off-ramp are required to create a work zone to the northern side of the off-ramp. This will be followed by some work on the southern side of the off-ramp. One lane on the off-ramp will be closed to provide space in which to safely carry out the work. Changes to traffic will be required and road users will be advised in advance of these changes.

Cyclist access in the eastbound direction will be maintained on the ramp and the M2 Motorway until the second half of 2016, when a closure of the cycle lane will come into effect. After that occurs cyclists will not be permitted on the ramp and the M2 Motorway at this location and will follow a temporary diversion for up to 18 months. Provisions for cyclists using the M2 Motorway and the off-ramp will be reinstated at a later date as part of the project.

Work activities

Construction activities will take approximately 18 months and will include:

- Geotechnical investigations
- Vegetation clearing to the Hills M2 boundary reserve (to the north of the off-ramp)
- Demolition of exiting safety barriers
- Switching the off-ramp traffic initially to the southern side of the road followed by switching the traffic to northern side of the road
- Installation of temporary barriers to provide a safe working area
- Installation of temporary noise walls and the removal of existing noise walls
- Minor changes to the toll gantry to accommodate the changes to the lanes

Return 
local streets to local communities

Up to 
5,000 trucks per day
off Pennant Hills Road

Up to 
15 mins **travel time saving**


Deliver **improvements**
to local **air quality**

Up to 
21 **traffic lights bypassed**

improve 
the **efficient movement** of
state and **national freight**


Better and more
reliable trips
for people, businesses and freight



Australian Government

BUILDING OUR FUTURE

NSW
MAKING IT HAPPEN

transurban

- Excavation of a dive structure into the northbound NorthConnex tunnel
- Work to build the cycleway structure and underpass.

Plant and Equipment

Plant and equipment for this work includes:

- Excavator
- Trucks
- Knuckle boom lift
- Power tools
- Hand tools
- Core drill
- Saw cutter
- Lighting tower
- Cranes (various sizes)
- Drill and shotcrete rigs
- Concrete Truck
- Tipper
- Concrete saw
- Service locator
- Road sweeper
- Trucks for delivery and removal of material (i.e. broken rock, vegetation excess soil)

During the establishment of the work area, construction will be carried out at night between **9pm and 5am Sunday to Thursday** to minimise impacts on motorists and for the safety of workers.

Once the work site is established, the majority of work will be carried out during the day from **7am to 6pm** on weekdays and **8am to 1pm** on Saturdays. Some work will be required at night and on weekends due to traffic volumes on the motorway and safety requirements. These activities will be kept at a minimum and all impacted residents will be notified in advance of work occurring.

Workers and associated vehicles will access the Southern Compound between **7pm and 7am** to store work equipment and for deliveries.

Traffic management will be in place to ensure the safety of motorists, residents and workers. Variable message signs will be in place to advise of the changes to traffic conditions.

You are likely to experience increased noise during some of these activities and we will make every effort to minimise impacts by:

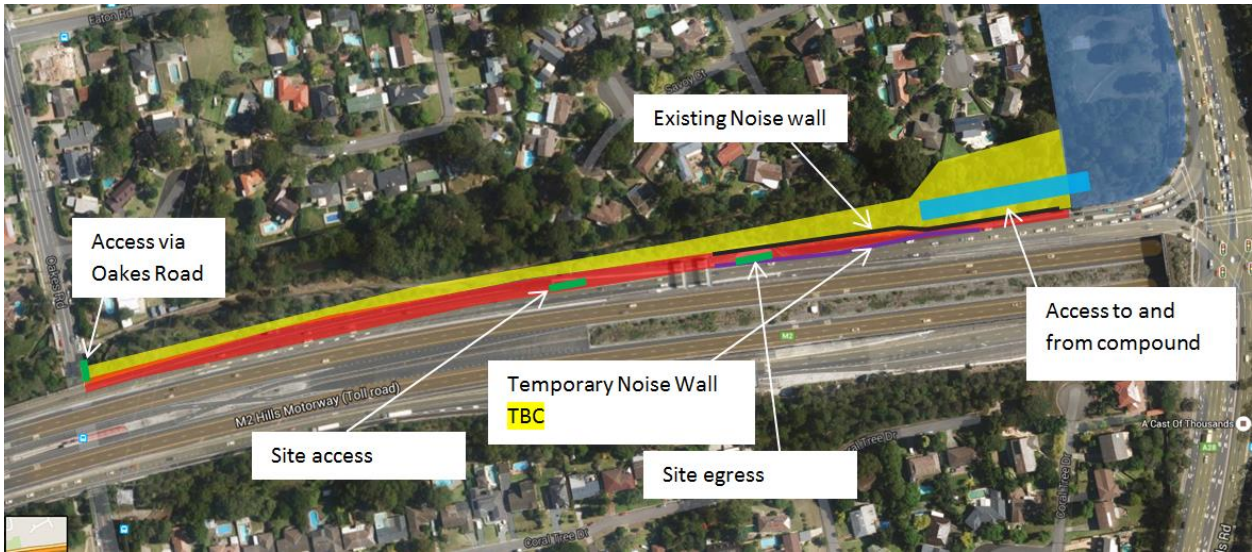
- Notifying residents and businesses before work starts near their property
- Using non-tonal reversing beepers on all machinery
- Turning off equipment and vehicles when not in use
- Scheduling noisy work to take place no more than two nights in a row and limiting noisy work to no more than three nights in one week at the same location
- Coordinating respite for residents most affected by the noise
- Where possible directing noise generating equipment and lighting away from residential properties.

We apologise for any inconvenience this may cause and we thank you for your patience. If you have any questions, comments or complaints, please do not hesitate to call us on **1800 997 057**, email enquiries@northconnex.com.au or visit the NorthConnex Community Information Centre at 118 Yarrara Road, Pennant Hills, open weekdays from 9am to 5pm.

Yours sincerely

NorthConnex Project Team

Location of work on the off-ramp



- Work on off-ramp:
- Vegetation clearing:
- Southern Compound:



www.northconnex.com.au



enquiries@northconnex.com.au



1800 997 057 (free call)