

26 April 2016

Ref: N0101

Dear Resident,

Night work: M1 Pacific Motorway median work, Wahroonga

Further to our notification distributed on 8 April 2016, as part of M1 Pacific Motorway median widening work, NorthConnex will establish a delineated construction zone in the median of the M1 Motorway between Alexandria Parade and 700m north of Edgeworth David Avenue (refer to map overleaf for location of work activities). To minimise traffic disruption the work must be carried out at night. This work will resume on Monday 2 May 2016 and will take about another two weeks to complete.

What are we doing?

The new construction area will assist in the delivery of widening work for two additional lanes, which will provide an entry and exit into the NorthConnex tunnel.

The work is broken up into a number of activities including installing signage and concrete barriers, line marking new lanes and installing concrete barriers with screens. These activities will not be delivered simultaneously. Details on each activity are listed below.

Installing safety road signs and barriers

Traffic signs indicating the presence of construction work and traffic in the area will be installed. Concrete safety barriers will be placed along the shoulders of the M1 Motorway.

Additional concrete barriers with protection screening placed on top will also be installed along the length of the M1 Motorway median work area to establish a safe work zone for the upcoming widening work.

Plant and equipment used for this work includes:

- Semi-trailers to deliver the barriers to site
- Cranes to lift and place the barriers
- An excavator to prepare the shoulders for the barriers
- Two tipper trucks to remove materials
- Hammer drills and coring drills
- Hand held power tools
- Generator
- Light towers.

The work started on 14 March 2016.

Return 
**local streets to
local communities**

Up to 
5,000 trucks per day
off Pennant Hills Road

Up to 
15 mins
**travel time
saving**


Deliver
improvements
to local **air quality**

Up to 
21
**traffic lights
bypassed**

improve 
the efficient movement of
state and national freight


Better and more
reliable trips
for people, businesses and freight

Line marking

To maintain traffic flow on the M1 Motorway, the existing lane markings will be modified. This will direct traffic out towards the shoulders and away from the newly created construction zone in the median. The team will first paint the new lines on the road and will then use a water blaster to remove the old lines.

Equipment used for this work includes:

- A water blaster
- Paint truck
- One gas burner to install the new line markers
- Light towers.

This work started on 21 March 2016.

You may experience noise during the work, however we will make every effort to minimise impacts by:

- Turning off machinery when not in use
- Using non-tonal reversing beepers on all machinery
- Completing saw cutting as early as possible in the evening
- Not working more than three nights a week and no more than two nights consecutively
- Consulting with directly affected residents about respite offers.

Traffic management

Traffic management will be in place to ensure the safety of motorists, residents, pedestrians and workers. Lane closures on the M1 will vary depending on the work but will include northbound and southbound closures between 9.30pm and 5am Sunday to Thursday.

We apologise for any inconvenience this may cause and we thank you for your patience. If you have any questions, comments or complaints, please do not hesitate to call members of the project team on **1800 997 057**, email enquiries@northconnex.com.au or visit the NorthConnex Community Information Centre at 118 Yarrara Road, Pennant Hills, open Monday to Friday from 9am to 5pm.

Yours sincerely

NorthConnex Project Team



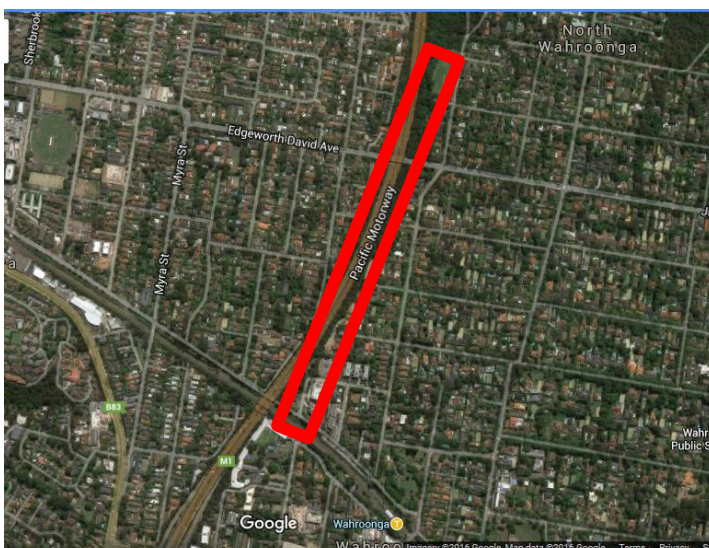
www.northconnex.com.au



enquiries@northconnex.com.au



1800 997 057 (free call)



Work Zone