

1 April 2016

Ref: N0091

Dear Resident

## Geotechnical investigations for NorthConnex - Wahroonga

To assist in the preparation of final design for widening the M1 Pacific Motorway, geotechnical investigations are required at two locations along the project corridor in Wahroonga.

One location is near Benson Close and the other is John Hughes Place, both locations are on publicly owned land near to private property and are identified in the map overleaf.

### What are we doing?

During the investigations, a drill rig with support equipment will be used. The work site will be 30 metres long by six metres wide. The bore holes will be about 100 millimetres in diameter.

The geotechnical investigations will include:

- Marking out locations for each borehole
- Setting up a safe work area with site specific environmental controls
- Collecting borehole soil and rock samples
- Backfilling the hole and repairing the surface.

The work locations are indicated on the map overleaf.

Equipment and plant for the work includes:

- One drill rig
- Temporary fencing
- Traffic control
- Two light vehicles.

Each borehole will take up to 10 days to complete. Work is expected to start on 7 April with service investigations at each location and the geotechnical work will start on 11 April at the borehole location in John Hughes Place and will start on 14 April at the location in Benson Close. Work will take place Monday to Friday, between 8am and 6pm. No work will take place on Saturdays or Sundays.

The drill rig and fencing will remain in place during the investigation work. In the event of wet weather the work will start on the next available day.

You will experience noise during the work including; hammering, drilling and a generator. Noise will be limited to work hours. Minor disruption to access, on-street parking and traffic may occur and will be managed safely. Residents will still be able to access their properties at all times. Work sites will be made safe and secured at the beginning and end of each shift.

After the work has been completed the boreholes will be backfilled and sealed and work sites restored to their previous condition.



We apologise for any inconvenience this may cause and thank you for your patience. If you have any questions or complaints, please do not hesitate to call us on 1800 997 057, email [enquiries@northconnex.com.au](mailto:enquiries@northconnex.com.au) or visit the NorthConnex Community Information Centre at 118 Yarrara Road, Pennant Hills, open weekdays from 9am to 5pm.

Yours sincerely

**NorthConnex Project Team**



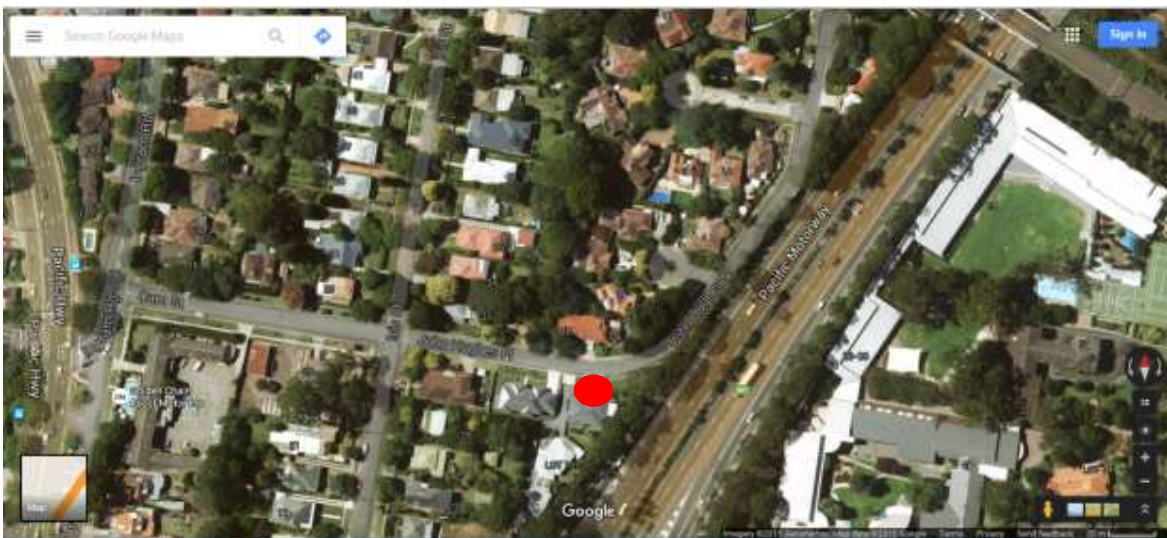
[www.northconnex.com.au](http://www.northconnex.com.au)



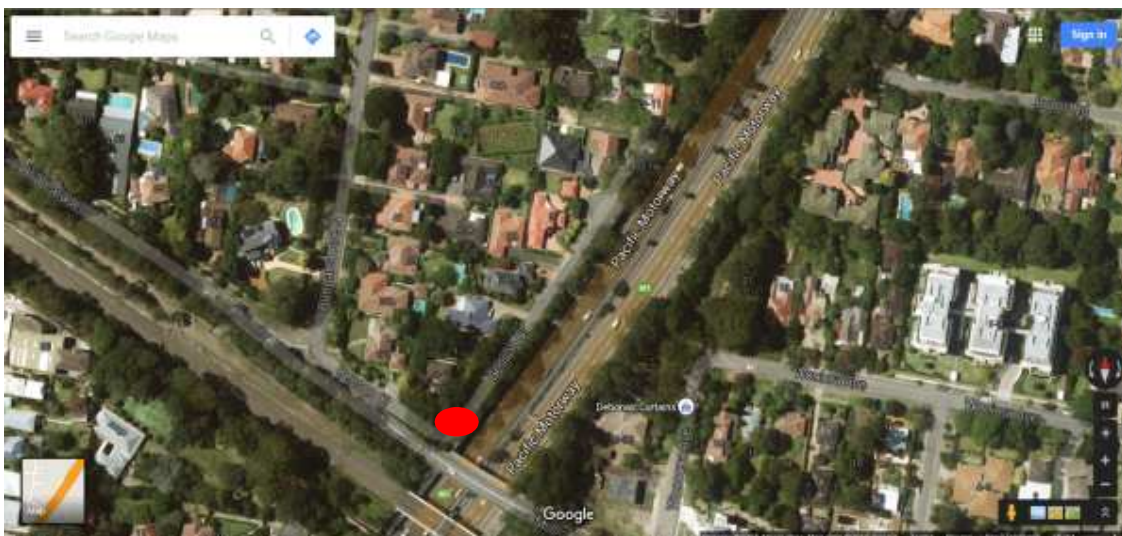
[enquiries@northconnex.com.au](mailto:enquiries@northconnex.com.au)



1800 997 057 (free call)



Borehole location John Hughes Place



Borehole location Benson Close