

9 June 2016

Ref: N0127

Dear Resident,

Night work: M1 Pacific Motorway median work, Wahroonga

NorthConnex will be continuing upgrade work on the M1 Pacific Motorway in the construction zone in the median strip, between Alexandria Parade and 700 metres north of Edgeworth David Avenue (refer to map overleaf for location of work activities). Please note this notification supersedes N0101 distributed on 1 June 2016 as it includes new tasks and equipment. To minimise traffic disruption the work must be carried out at night. This work is expected to take about six months to complete, weather permitting.

What are we doing?

Work will take place in the new construction zone that has been established on the M1 Motorway. This work is to widen the road for two additional lanes, which will provide an entry and exit into the new NorthConnex tunnel.

Work will include:

- Removal of a guard rail using rattle guns
- Pavement saw cutting on the median shoulders (full length of construction site area)
- Spoil removal
- Earthwork to move topsoil and remove unsuitable material
- Pouring of concrete
- Spray sealing the new road surface
- Installation of concrete barriers for traffic switch and the installation of a crash cushion using a rattle gun
- Line marking removal and painting new lines and installation of traffic safety signs
- Installation of anti-gawk screens.

Equipment that will be used includes:

- Rattle guns
- Track mounted guardrail machine
- Saw cutter with concrete / asphalt blade
- Jack hammer
- Excavator with bucket and rock breaker attachments
- Compactors
- Sweeper truck
- Concrete agitator trucks
- Compressors
- Rollers
- 25 tonne franna crane
- Solar lighting towers

Return 
**local streets to
local communities**

Up to 
5,000 trucks per day
off Pennant Hills Road

Up to 
15 mins
**travel time
saving**


Deliver
improvements
to local **air quality**

Up to 
21
**traffic lights
bypassed**

improve 
the efficient movement of
state and national freight


Better and more
reliable trips
for people, businesses and freight

- Bob cat
- Gas burner for road pavement markers
- Vacuum excavation truck
- Generator.

You may experience noise during some of these activities and we will make every effort to minimise impacts by:

- Turning off machinery when not in use
- Using non-tonal reversing beepers on all machinery
- Carrying out saw cutting as early as possible in the evening
- Not working more than three nights a week and no more than two nights consecutively for noisy work
- Coordinating respite for residents most affected by the noise.

Traffic management

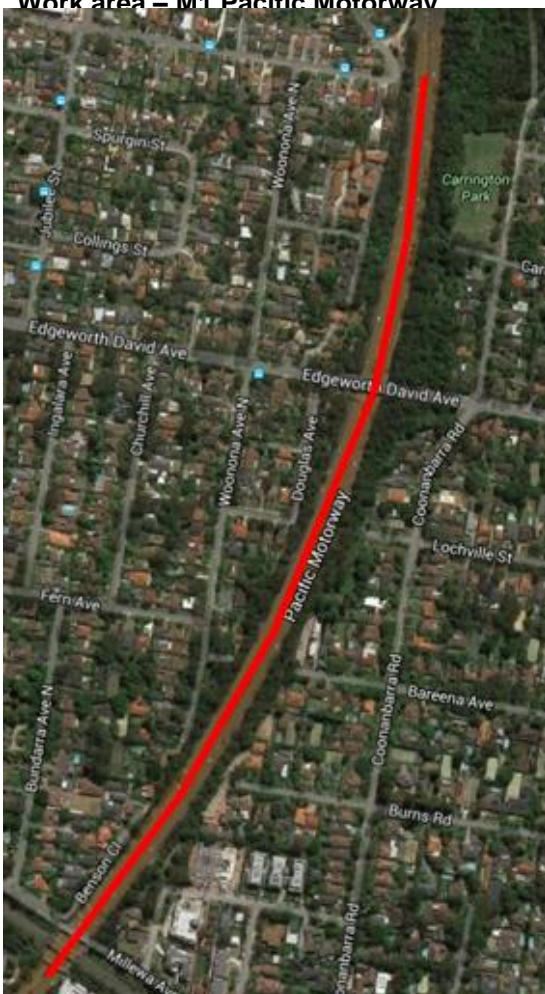
Traffic management and signage will be in place to ensure the safety of motorists, residents, pedestrians and workers. Access for motorists will be maintained at all times. There will be closures of the M1 northbound and southbound fast lanes between 9.30pm and 5am Sunday to Thursday, as part of this work.

We thank you for your patience, and if you have any questions or complaints, please do not hesitate to call us on **1800 997 057**, email enquiries@northconnex.com.au or visit the NorthConnex Community Information Centre at 118 Yarrara Road, Pennant Hills, open Monday to Friday from 9am to 5pm.

Yours sincerely

NorthConnex Project Team

Work area – M1 Pacific Motorway



Work area on the M1 Median between Alexandria Parade and Edgeworth David Avenue, Wahroonga.