

Pearces Corner site compound

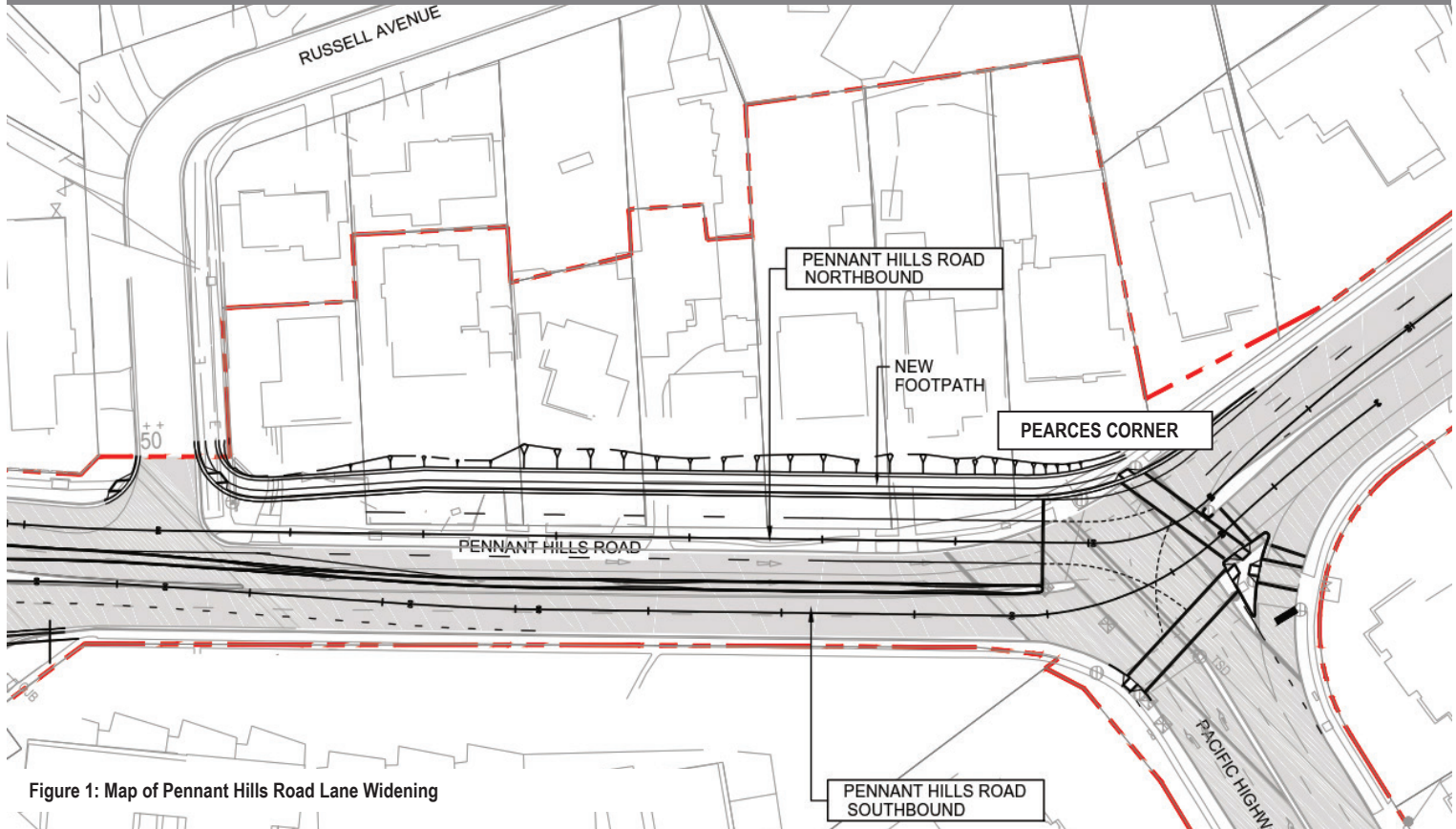


Figure 1: Map of Pennant Hills Road Lane Widening

NorthConnex is a nine kilometre tunnel that will link the M1 Pacific Motorway at Wahroonga to the Hills M2 Motorway at West Pennant Hills, removing around 5,000 trucks off Pennant Hills Road daily.

The tunnel motorway includes interchanges to the north and south to accommodate connections at either end of the project. When complete in 2019, it will link Sydney's north to the orbital network and enable travel from Newcastle (M1) to Melbourne without a single set of traffic lights.

NorthConnex will also boost the state and national economies by providing more reliable journeys and shorter travel times for the movement of freight.

The Pearces Corner site compound is located on the corner of the Pacific Highway and Pennant Hills Road, Wahroonga. The site compound will remain in place until late 2019.

As part of the Northern Interchange construction, its primary purpose is to deliver lane widening on the northbound lanes of Pennant Hills Road as well as construction of the tunnel ramps on the M1 Pacific Motorway between the Pacific Highway and Pennant Hills Road.

Road widening on the northbound lanes of Pennant Hills Road between Russell Avenue and the Pacific Highway will add two northbound lanes resulting in two lanes heading to Hornsby, and two turning lanes in the direction of the city.

Upon completion of the NorthConnex tunnel, the site compound will be removed and the area returned to Roads and Maritime Services.



Constructions activities

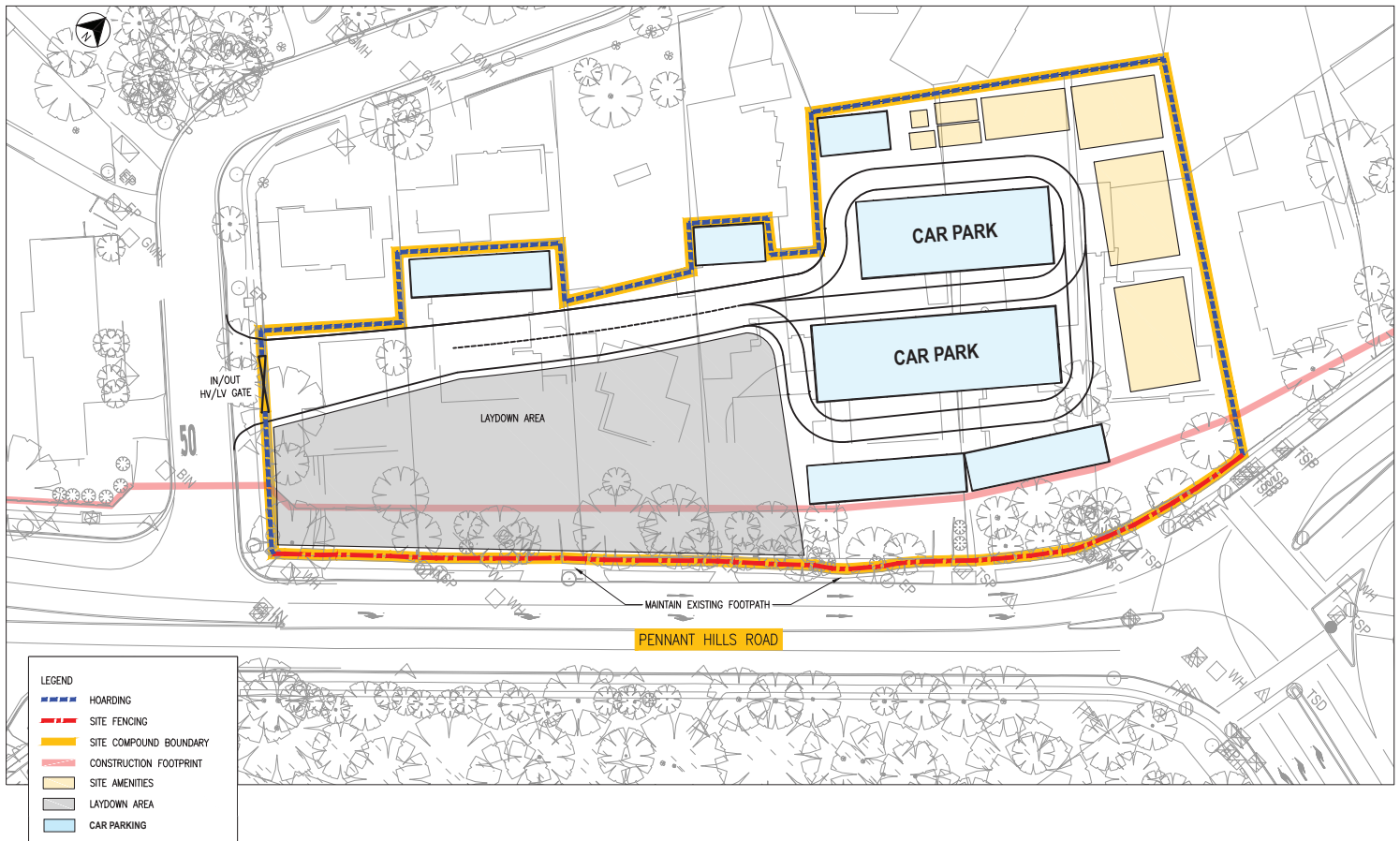
Planning approval for the compound was received in February 2016. The site will include staff amenities and a car park for up to 80 personnel.

Site establishment began in late 2015 with the removal of buildings, vegetation and tree clearing and installation of noise

hoarding. Site amenities are expected to be completed by May 2016.

Relocation of existing services including gas, water, communications and power will start in August 2016 with road widening work anticipated to start in late 2016.

Map of temporary construction compound



Construction impact controls

Environmental controls have been put in place to minimise the potential impact on the local community and environment from construction activity. These controls, summarised below, are

outlined in the Construction and Environmental Management Plan (CEMP) and its sub-plans, available on the NorthConnex website.

Table 1: Outline of potential impact from construction activities and control measures

Potential impact	Control measures
Noise	<ul style="list-style-type: none"> • Construction work on the surface will be limited to standard construction hours, except when approval is granted for working outside these hours • Hoardings will reduce noise from this site • Vehicles and construction machinery will be well maintained • Vehicles will be fitted with non-tonal reversing beepers • Equipment and vehicle engines will be turned off when not in use

Potential impact	Control measures
Air quality (dust and emissions)	<ul style="list-style-type: none"> • Construction activities will be carried out so as to minimise dust generation • Water carts, sprays, sprinklers and dust curtains will be used to suppress dust when needed • Disturbed areas including stockpiles will be stabilised • Truck loads will be covered • Vehicle tracks on site will be sealed once compound establishment is complete • Equipment and vehicle engines will be well maintained and turned off when not in use to minimise emissions • Shaker grids will be used to minimise dust or mud tracking • Weather conditions will be monitored and construction activities adjusted as necessary.
Traffic, pedestrian and road safety	<ul style="list-style-type: none"> • Safe pedestrian access around the worksite will be maintained • Any temporary access paths will be signposted, kept smooth and regularly inspected for trip hazards • Driver information signposting, including variable message signs, will be used to advise of changes to traffic conditions • Traffic controllers will direct traffic in the event of temporary lane closures around any work. • Large centralised car parking facilities and a bus shuttle system to transport personnel to site will avoid impacts on local streets • A traffic control room will operate 24/7, providing traffic condition information and to assist responding to traffic incidents.

More questions?

The NorthConnex project team is committed to working closely with you to inform you of upcoming work over the course of the project and to minimise impact from our construction activities.

For further information on NorthConnex please don't hesitate to contact members of the project team.

Phone: 1800 997 057 (24 hours a day)

Email: enquiries@northconnex.com.au

Mail: Locked Bag 1001, West Pennant Hills NSW 2125

Visit: NorthConnex Community Information Centre, 118 Yarrara Road, Pennant Hills, open weekdays from 9am to 5pm.

NorthConnex Website

Visit www.northconnex.com.au to stay in touch with the latest project information including construction progress and activities in your area. <http://www.northconnex.com.au/northernventilation.php>

Visit the interactive map on the website to view the depth and route of the main alignment tunnels: http://giswebapps.aecomonline.net/northconnex/map_view.html

If you require the services of an interpreter, please contact the **Translating and Interpreting Service (TIS International)** on **131 450** and ask them to call the NorthConnex Project Team on **1800 997 057** - the interpreter will then assist you with the translation. TIS International business hours are 9am to 5pm Monday to Friday.

Translator



131 450

For more information:

 1800 997 057 (free call)

 enquiries@northconnex.com.au

 www.northconnex.com.au